

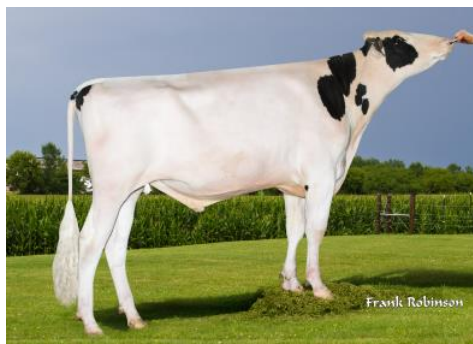
| 12/2018 | PRUEBA - GENÓMICA | | NM\$ +577 | |
|------------|-------------------|--------|-------------------|-----------|
| Leche | +724 | 80%R | Mérito Fluido \$ | +509 |
| Grasa | +56 | +0.10% | Mérito Queso \$ | +610 |
| Proteína | +38 | +0.06% | Grazing Merit \$ | +576 |
| Cél Som. | 2.68 | 78%R | Gestation Len. +1 | FI +2.4 |
| Vida Prod. | +3.2 | 75%R | PTA Liv -1.3 | 69% Rel |
| Preñez H. | +1.6 | 75%R | EFI 8.5% | GFI 10.0% |
| TCN | +5.1 | | | |
| TCV | +2.7 | | 0 Hijas 0 Hatos | 100% US |

| 12/2018 | RESUMEN PARTO | | SCE 7.9 % | |
|----------------------------|---------------|------|-----------|--|
| Fac. De Parto del Toro | 7.9% | 70%R | 8 Obs | |
| Fac. De Parto de las Hijas | 4.1% | 68%R | 0 Obs | |
| Nacidos Muertos -Toros | 8.1% | 64%R | 8 Obs | |
| Nacidos Muertos -Hijas | 4.2% | 63%R | 0 Obs | |

| 12/2018 | HA RESUMEN TIPO | | TPI +2522 | |
|---------------------|-----------------|-----------------|-----------|-----------|
| TIPO +2.87 | 80%R | Comp. Ubre+2.35 | FLC+1.82 | BSC +1.41 |
| | | | 0 D/ | 0 H |
| Estatura | +3.54 | Alta | | |
| Fortaleza | +1.13 | Fuerte | | |
| Prof. Corporal | +1.44 | Profunda | | |
| Carac. Lechero | +1.74 | Anguloso | | |
| Angulo Grupa | -1.19 | Isq. Altos | | |
| Ancho Grupa | +2.83 | Ancha | | |
| Patas Vta. Lateral | +0.26 | Curvas | | |
| Patas Vta. Trasera | +2.24 | Abiertas | | |
| Ángulo Pezuña | +2.15 | Alto | | |
| Clas. Patas y Pez. | +2.42 | Alta | | |
| Inserción Ubre Ant. | +2.80 | Fuerte | | |
| Altura Ubre Post. | +3.46 | Alta | | |
| Ancho Ubre Post. | +3.18 | Ancha | | |
| Ligamento Central | +2.39 | Fuerte | | |
| Profundidad Ubre | +3.44 | Poco Prof. | | |
| Pezones Anteriores | +0.74 | Cerrados | | |
| Pezones Posteriores | +0.92 | Cerrados | | |
| Largo Pezones | -0.76 | Cortos | | |

Stantons Mont Michigan TC

Monterey x Mccutchen x Observer



Padre: View-Home Monterey-ET
Madre: Stantons Mccutchen 1174 Agree
 02-00 2x 365d 30543m 4.5 1380f 3.1 954p
Abuelo: De-Su Bkm Mccutchen 1174-ET TV TL TY TD
Abuela: Stantons Observer Extreme VG-85
 01-09 2x 365d 39184m 3.4 1329f 3.0 1164p
Bisabla: De-Su Observer-ET TR TV TL TY TD VG-86
Bisabla: Wabash-Way Bol Elizabeth-ET VG-87
 02-00 2x 365d 35100m 3.3 1167f 3.0 1058p